

School Health Services Planning during the COVID-19 Pandemic

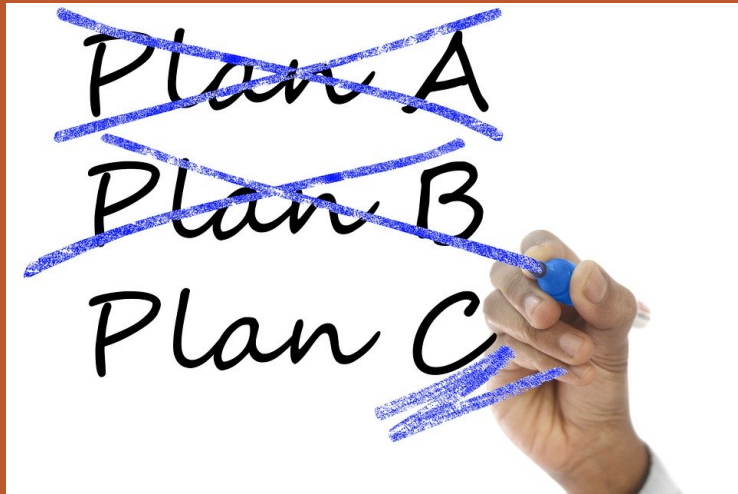


ROBIN WALLIN DNP, RN, CPNP-PC, NCSN

DIRECTOR OF HEALTH SERVICES

PARKWAY SCHOOL DISTRICT, CHESTERFIELD, MO

Focus of Initial
Planning



Pandemic Plan

- Planning, Prevention & Alert
- Response/School Open
- Response/School Closed
- Recovery

Supporting Students and Families During School Closure

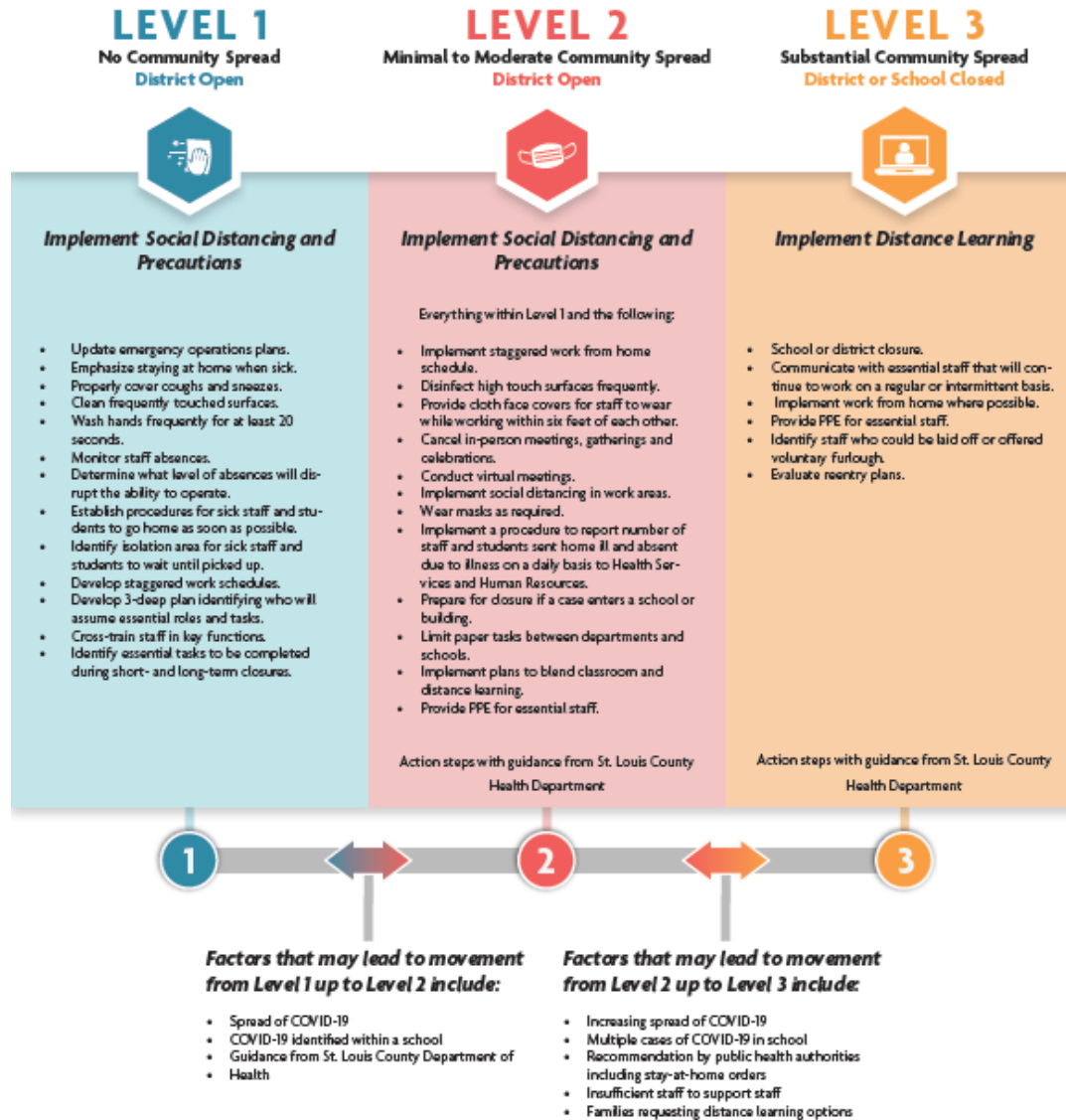
- Food Distribution
- Device and Hotspot Distribution
- Meeting Social/Emotional Needs Virtually
- Virtual Instruction

School Reentry Planning



https://www.parkwayschools.net/cms/lib/MO01931486/Centri city/Domain/2466/PandemicResponsePlan7_15_2020.pdf

RESPONSE LEVELS



School Reentry Planning: Safety and Health

Safety and Health at School

- Masks
- Cleaning and disinfecting
- Monitoring symptoms
- Social distancing
- Hand hygiene practices and education
- Air circulation
- Buses
- Adjusting large events
- Limiting visitors



School Health Services Reentry Planning Focus and Concerns



- PPE
- Chronic health conditions
- Developing new protocols
- Case tracing and surveillance
- Training
- Communication
- Changing guidance