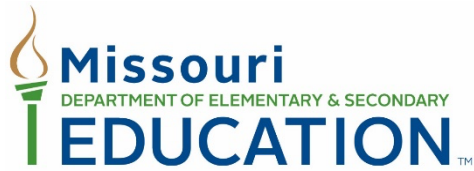
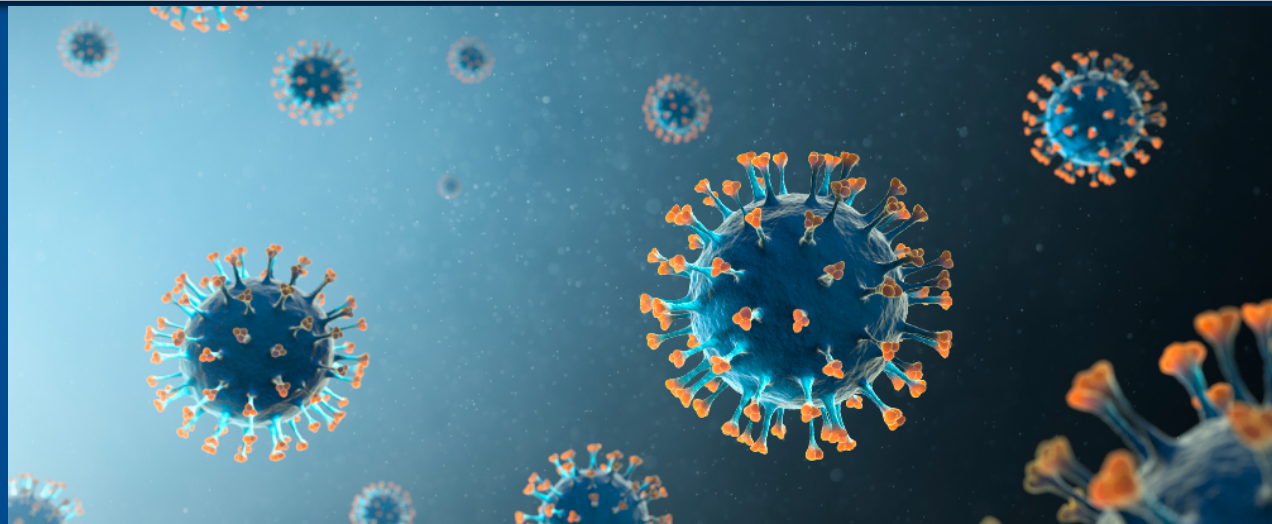


*Department of Elementary & Secondary Education &
Department of Health & Senior Services*



COVID-19 School Reopening Guidance FAQs





- Unintended consequences of building closures:
 - ❑ Difficulty meeting the needs of all students
 - ❑ Limited access to online learning resources
 - ❑ Reduced abuse & neglect hotline calls
 - ❑ Social-emotional development
 - ❑ Mental health concerns for students, families & staff



- Guidance FAQ document
 - ❑ Phase 1: Proactive Strategies (published July 9)
 - ❑ Phase 2: Reactive Strategies (published August 3)
- No statewide health-related mandates, at this time



Proactive Strategies

- Screening:
 - ❑ Students: at-home screening (with symptom checklist); may include onsite screening
 - ❑ Staff: at-home and onsite screening (adults more likely to transmit this virus)
 - ❑ Visitors: limit inside building; offer remote meeting options; screen and track if enter



Proactive Strategies

- Physical Distancing:
 - ❑ Cohort: likely easier with younger grades; assigned seats with records
 - ❑ Buses: hand hygiene, assigned seats, load back to front, wear masks, open windows
 - ❑ Misc: eat meals in classroom when possible; use outdoor/large spaces creatively



Proactive Strategies

- Masks/Face Coverings:
 - Recommend schools require students & staff to wear
 - Especially when groups are not cohorted or not able to physically distance from one another (i.e. on buses, entering/exiting buildings, in hallways)
 - Consider how best to provide age-appropriate education on safe & proper use



Reactive Strategies

- Symptomatic at School:
 - ❑ Encourage families/staff to seek medical attention
 - ❑ Wear face covering
 - ❑ Space separate from nurse's office to triage students/staff with COVID-19 symptoms
 - Increase PPE
 - Limit entrance/exit
 - Keep record of those entering



Reactive Strategies

- Positive Cases in the School Community:
 - ❑ District & school COVID-19 point of contact
 - ❑ Two-way communication between LPHAs & schools
 - ❑ LPHA communicates case info & directives to school
 - ❑ Consistent protocol will reduce confusion
 - ❑ Closure decisions (of any kind) made collaboratively
 - ❑ Discuss criteria that could lead to expanded mitigation strategies or a shift to distance learning



Reactive Strategies

- Contact Identification & Tracing:
 - Lead by LPHA where positive case resides
 - Work towards standard, consistent protocol & communication procedures
 - Schools ready to provide documentation
 - Attendance records
 - Cohort lists
 - Seating charts

Protocol for Schools Assisting Health Department in Close Contact Identification for COVID-19 Cases

School notified by family or Health Department about student with **positive** test for novel coronavirus

Student* AND household contacts** immediately excluded from school until approved by the Health Department for return to school.



Contacts identified: Students with close contact with the **positive** student:

- During the student's infectious period (48 hours before and for 10 days after symptoms developed)
- Within 6 feet
- Contact >15 minutes

Classroom contacts seated within 6 feet in the front, side, and back of student

Lunch contacts within 6 feet for > 15 minutes

Free period contacts within 6 feet for > 15 minutes

Transportation contacts within 6 feet for > 15 minutes

Sports team or extracurricular contacts within 6 feet for > 15 minutes



Provide list of students who are possible close contacts to the Health Department:

- Student name
- Parent(s) name and phone number
- Home address
- Face covering usage***



Health Department will determine which students should be quarantined and excluded from school.**

*****Face covering** usage may be considered for those students who can reliably be expected to wear and report compliance with mask usage.

*Students with a positive test will be isolated and should not come to school until no fever for ≥ 24 hours (without fever-reducing medication) AND symptoms improving AND approved by the local health department to return to school (typically 10-14 days from start of symptoms). For St. Louis City, patients must also be released by primary care provider.

**Students who are determined to be close contacts will be quarantined and should not come to school until at least 14 days after last potential exposure AND approved by the local Health Department for return to school.

Health Department	Phone
St. Louis County case reporting (cdcs.doh@stlouisco.com)	314-615-2660
St. Louis County provider question (provider-COVID@stlouisco.com)	
St. Louis County school nurse liaison	
St. Louis City	314-657-1499
St. Louis City school reporting (casereporting@stlouis-mo.gov)	314-657-1453
St. Charles County	636-949-1899
Missouri Department of Health	877-435-8411
Illinois Department of Health	800-889-3931